

آزمایشگاه پاتوبیولوژی نور

لیست آزمایشهای تخصصی و پانل بیماری ها



آدرس: تهران، بلوار کشاورز، بین کارگر و جمالزاده، ساختمان ۹۳

تلفن: ۶۶۴۲۹۸۷۱ دورنگار: ۶۶۴۲۳۳۳۷



آزمایشگاه پاتوبیولوژی نور

لیست آزمایشهای تخصصی و پانل بیماری ها

ویرایش دوم، پاییز ۱۳۹۵، تیراژ ۲۰۰۰ جلد
کلیه حقوق برای آزمایشگاه پاتوبیولوژی نور محفوظ است.

Noor Pathobiology Laboratory

List of Specialty Tests & Diseases Panel

www.noorlab.ir

طراح: رادین گرافیک

www.radingraphic.com

به نام آفریدگار یکتا

همکار ارجمند

با درود

افتخار آزمایشگاهیان در سراسر جهان در این است که امروزه بیش از هفتاد درصد تصمیم سازی های پزشکی به جواب آزمایش وابسته است، این امر باعث تکیه، اعتماد و وابستگی روز افزون پزشکان به آزمایشگاه های پزشکی شده است. با کمال مسرت به استحضار می رساند که آزمایشگاه پاتوبیولوژی نور با مدیریت و برنامه ریزی استادان دانشگاه، کادرمجرب، تجهیزات پیشرفته و بهره مندی از دانش و روش های نوین آزمایشگاهی ارائه خدمت می نماید. ساختمان جدید آزمایشگاه در نه طبقه بنا شده و دارای بخشهای زیر می باشد:

هورمون شناسی، بیوشیمی، ایمونولوژی، هماتولوژی، میکروب شناسی، قارچ شناسی، ویروس شناسی، تشخیص مولکولی (PCR)، سیتولوژی، پاتولوژی، ایمونوهیستوشیمی (IHC)، کروماتوگرافی، توکسیکولوژی، HPLC، جذب اتمی، فلوسیتومتری و.... این آزمایشگاه در بخش تشخیص مولکولی پانل کامل بیماریهای شایع ویروسی، میکروبی، و انگلی و همچنین برخی از آزمایش های تشخیصی هماتولوژی و ایمونولوژی مولکولی را با روش های گوناگون در کوتاه ترین زمان انجام می دهد. همچنین اولین مرکزی است که در کشور آزمایش های فوق تخصصی پیوند اعضا را راه اندازی کرده است. این آزمایشگاه دارای بخش فوق تخصصی SDS Page Electrophoresis جهت الکتروفورز مایعات بدن، CSF، مایع سینوویال ... و پروتئین های ادرار، ایزوالکتریک فوکوزینک و ایمونوفیکساسیون می باشد. امید است که به یاری خداوند متعال و پیشنهادها و راهنمایی های ارزنده شما همکار گرامی بتوانیم در تشخیص به موقع و دقیق بیماریها و در نتیجه مداوای بیماران خدمات شایسته ای را ارائه نماییم.

مدیریت

آزمایشگاه پاتوبیولوژی نور

پاییز ۱۳۹۵

لیست آزمایشهای تخصصی

پاتولوژی.....۶	
هماتولوژی.....۷	
بیوشیمی.....۹	
ایمونولوژی.....۱۲	
میکروبیولوژی.....۱۶	
تشخیص مولکولی.....۱۸	
سایر بخش ها.....۲۰	

پانل بیماری ها

کم خونی ها.....۲۷	
غربالگری بدخیمی.....۲۷	
بیماری های قلب و عروق.....۲۸	



Noor Pathobiology Laboratory

List of Specialty Tests & Disease Panels

پانل بیماری ها

دیابت..... ۲۹



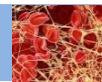
اندازه گیری سطح داروها..... ۲۹



باروری..... ۲۹



بیماری های همولیتیک و ترومبوفیلیک ۳۰



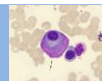
فشار خون..... ۳۰



بیماری کبدی..... ۳۱



میلوما..... ۳۱



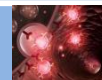
غربالگری نوزادان..... ۳۲



بیماری های اتوایمیون ۳۳



بیماری های سیستمیک ۳۳

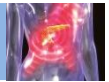


بیماری های کلیوی ۳۳



پانل بیماری ها

بیماری های پانکراس ۲۹



تومور ها ۳۴



سل ۳۵



پایش داروها ۳۵



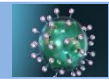
بیماری های تیروئید ۳۵



توکسیکولوژی ۳۶



هپاتیت ویروسی ۳۶



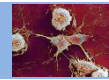
پاتوزنهای ویروسی ۳۷



ویتامین ها ۳۸



مولتیپل اسکلروزیس ۳۹



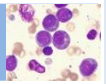


Noor Pathobiology Laboratory

List of Specialty Tests & Disease Panels

پانل بیماری ها

لوسمی ۳۹



نقص ایمنی ۳۹



پیوند اعضا ۴۰





Pathology

- Block & Slide Preparation
- Bone Marrow Aspiration Pathology
- Bone Marrow Biopsy Pathology
- Body Fluid Cytology by Cyto centrifuge Preparation
- Buccal Smear
- Congo Red Staining for Amyloidosis
- Consult & Block Pathology
- Fluid Cytology
- FNA (Fine Needle Aspiration)
- Hemosiderin Staining
- Immunohistochemistry (IHC)
- Pap Smear (cytology) & Thin Layer Preparation (E.prep)
- Special Stain (H&E)
- Tissue Pathology
- Special Stain
- Urine Cytology by Cyto centrifuge Preparation



Hematology

Hematology

- Anti A & B Titer
- Blood Group & Rh
- Body Fluid Analysis
- Borrelia Parasite
- CBC
- Coombs Direct & Indirect
- Eosinophil Count
- ESR
- G6PD
- Hams Test
- LE Cell
- Leishman Body
- Malaria parasite
- Osmotic Fragility
- Reticulocyte
- Sickle Prep
- Sucrose Hemolysis Test

Coagulation

- BT , CT
- Vitamin K
- PT , APTT , TT
- D-dimer , FDP , Fibrinogen
- VW Ag
- Coagulation Factors: II, V, VIII, ...
- Protein C , Protein S
- Antithrombin III
- Leiden Factor (APCR)
- Lupus Anticoagulant
- Factor II (GA20210)mutation by PCR
- Factor V Leiden mutation by PCR
- Factor VII mutation by PCR
- Factor XIII mutation by PCR
- Beta fibrinogen mutation by PCR
- MTHFR Mutation by PCR
- PAI Mutation by PCR

Electrophoresis

- Hb Electrophoresis(Capillary Electrophoresis)
- Hb A, A2, F, C, D, G, S, ...
- Protein Electrophoresis(Capillary Electrophoresis)
- Lipoprotein Electrophoresis
- Iso-Electric Focusing for OCB in CSF
- CSF Electrophoresis-SDS Page
- Serum Immunoelectrophoresis
- Urine Protein Electrophoresis-SDS Page
- Urine Protein Electrophoresis(Capillary Electrophoresis)
- Urine Immunoelectrophoresis
- Free Light Chain in Serum & Urine
- Evaluation and Classification of Gammopathies



Biochemistry

Specialized Biochemistry

- ACE , ADA , ADH
- Ammonia & Lactate & Pyruvate
- Apo A1 & Apo B & Lpa
- Calprotectin & Lactoferrin(stool)
- Ceruloplasmin
- Copper (Serum & Urine)
- Clostridium dif. (A&B toxines)
- CTX (Beta crosslap) , PINP
- Cystatin C , NGAL
- Dopamine , Adiponectin
- Epinephrine & Norepinephrine
- Metanephrine & Normetaneph.
- Erythropoietin , Chromogranin A
- Folic acid (Serum & RBC)
- Galactose & galactose 1 P.U.T
- Haptoglobin
- HbA1c , Fructosamine

Specialized Biochemistry

- HE4 , AMH
- Homocysteine , Serotonin
- Inhibin A & Inhibin-B
- Macroprolactin , Leptin
- Micro Alb. (Urine & CSF)
- NGAL , Pyruvate kinase
- NSE , CA 72-4 , Cyfra-21
- PTH (1-84) , Glucagon
- Semen Fructose
- Stone Analysis
- Sweat Test , Tryptase
- Stool for Trypsin Activity, Elastase
- Troponin I & Pro BNP(NT)
- Trace elements: Zn, Ag, Pb, Hg, ...
- Vitamin B1, B2, B6, B12
- Vitamin D 25OH & 1,25 (OH)₂
- VMA , HVA , MMA



Biochemistry (cont.)

General Biochemistry

- Acid Phosphatase(Prostatic)
- Acid Phosphatase(Total)
- Albumin Serum
- Albumin CSF
- Albumin Urine
- Aldolase
- Alkaline Phosphatase
- Alkaline Phosphatase Isoenzyme
- Amylase
- Bilirubin Direct
- Bilirubin Total
- Blood Sugar
- Calcium (Total & Ionized)
- Chloride
- Cholesterol
- Cholinesterase
- CPK

General Biochemistry

- CPK-MB
- Creatinine
- Creatinine Clearance
- FBS
- Fluid Analysis
- Free fatty acids
- Gamma GT
- GCT
- GTT
- HDL Cholesterol
- Iron
- LDH
- LDL Cholesterol
- Lipase
- Lithium



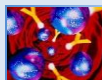
Biochemistry (cont.)

General Biochemistry

- Magnesium
- Osmolality (Serum)
- Phosphorus
- Potassium
- Protein Total
- SGOT (AST)
- SGPT (ALT)
- Sodium
- TIBC
- Total Lipid
- Transferrin
- Transferrin Saturation
- Triglycerides
- Urea
- Uric acid
- VLDL

Urine Biochemistry

- Addis Count
- Delta Aminolevulinic Acid
- Dysmorphic RBC
- HVA , VMA , MMA
- Metanephrine & Normetanephrine
- Myoglobin
- Na , K , Mg , Ca ,ph , Chloride
- NMP-22
- Oxalate & Citrate (Ran.& 24 hrs.)
- Osmolality
- Porphyrin
- Uric acid , Mg , Cystine
- Urine Analysis
- Urine Protein 24 hrs. & random



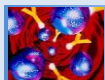
Immunology

Immunology

- 2ME
- AH50
- Alpha 1 Anti Trypsin
- ANA
- ANCA
- Anti Acetylcholine Receptor Ab
- Anti Alpha Fodrin Ab (IgG/IgA)
- Anti B2 Glycopro. Ab (IgG/IgM)
- Anti C1q
- Anti Cardiolipin Ab (IgG/IgM)
- Anti Centromer Ab (IgG)
- Anti DGP Ab (IgG/IgA)
- Anti DNA (DS)
- Anti Desmoglein Ab (I & III)
- Anti Endomysial Ab (IgG/IgA)
- Anti Factor H
- Anti GAD
- Anti GBM Ab
- Anti Gliadin Ab (IgG/IgA)

Immunology

- Anti Histone Ab
- Anti infliximab
- Anti Intrinsic factor Ab
- Anti Islet antigen 2 Ab
- Anti Islet cell Ab
- Anti jo-1 Ab
- Anti MBP Ab
- Anti Mitochondrial Ab (AMA)
- Anti MOG
- Anti Mullerian Hormone
- Anti Musk Ab
- Anti Parietal Ab
- Anti Pemphigus Ab (IgG)
- Anti Phospholipase A2 Receptor Ab
- Anti Phospholipid Ab (IgG/IgM)
- Anti Platelet Ab
- Anti PR3 Ab
- Anti RNP Ab
- Anti SCL- 70 Ab



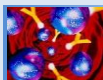
Immunology (cont.)

Immunology

- Anti Smooth Muscle Ab (ASMA)
- Anti SSA (Ro) Ab
- Anti SSB (La) Ab
- Anti Thyroglobulin Ab (IgG)
- Anti Thyroid Microsomal Ab (TPO)
- Anti TSH receptor Ab
- ASCA (IgG)
- ASO
- Aspergillus Fu. Ab (IgG/IgM)
- Bordetella p. Ab (IgG/IgA)
- Borrelia Burgdor. Ab (IgG/IgM)
- Brucella Ab (IgG/IgM)
- C1 Inhibitor (Con. & function)
- C1q
- C3 & C4
- CCP Ab, MCV Ab
- CH50
- Chlamydia Ab (IgG/IgM)
- CIC

Immunology

- CMV Ab (IgG/IgM)
- CMV Ag (pp65)
- CMV IgG avidity
- Cold Agglutinin
- Coombs wright
- CRP & CRP-HS
- Cryoglobulin
- CSF IgG
- Diphtheria Ab (IgG)
- EBV Ab (IgG/IgM)
- Entamoeba Histolytica Ab (IgG)
- Factor B, H, I
- Fasciola Ab (IgG)
- Free kappa (Serum & Urine)
- Free lambda (Serum & Urine)
- FTA Ab & Abs
- Galactomannan
- H. Pylori (IgA/IgG/IgM)
- H. Pylori Stool Ag



Immunology (cont.)

Immunology

- HAV Ab (Total/IgM)
- HBcAb (Total)
- HBcAb (IgM)
- HBeAg
- HBsAb
- HBsAg(Quantitative)
- HCV Ab
- HEV Ab
- HIV Ab (1&2)
- HIV P24 Ag
- HLA B5
- HLA B51
- HLA B52
- HLA B8
- HLA B27
- HSV Ab (IgG & IgM)
- HTLV Ab (1&2)
- Hydatid Ab (IgG)
- IgA Serum & Saliva

Immunology

- IgE (Total & Specific)
- IgG
- IgG subclass 1,2,3,4
- IgM
- IGRA
- Immuno electrophoresis(S & U)
- IgG-immunofixation-CSF
- Kala Azar Ab (Total/IgM)
- Listeria Ab (IgG/IgM)
- Leptospira Ab(IgG/IgM)
- LKM Ab
- Measles Ab (IgG/IgM)
- Mono test
- MPO Ab
- Mumps Ab (IgG/IgM)
- Mycoplasma Pneum. Ab (IgG/IgM)
- NBT
- NMO-G Ab
- Oligoclonal band-CSF (OCB)



Immunology (cont.)

Immunology

- Oxidant/Anti Oxidant Balance
- Parvovirus B19 Ab (IgG/IgM)
- Pneumonia Ab (IgG/G2)
- Pregnancy test
- Procalcitonin
- R.P.R
- RF (Quantitative)
- Rubella Ab (IgG/IgM)
- Rubella IgG avidity
- Tetanus Ab (IgG)
- Toxocara Ab (IgG)
- Toxoplasma Ab (IgG/IgM)
- Toxoplasma IgG avidity
- TTG Ab (IgA/IgG)
- U.B.T
- VDRL
- VZV Ab (IgG/IgM)

Immunology

- Widal Agg. Test
- Wright Agg. Test



Microbiology

Aerobic & Anaerobic Culture For:

Body Fluids

- Ascitic Fluid
- BAL
- B.M Aspiration, B.M Biopsy
- CSF
- Pleural Fluid
- Pericardial Fluid
- Synovial Fluid
- Others

Upper & Lower Respiratory Infection

- Nasopharyngeal Swab
- Sputum
- Throat

Others : Ear, Eye

- For any Bacteria by Physician Request



Noor Pathobiology Laboratory

List of Specialty Tests



Microbiology (*cont.*)

Gastrointestinal Infections

- Aeromonas
- Campylobacter
- E.coli
- Helicobacter
- Plesiomonas
- Salmonella
- Shigella
- Yersinia enterocolitica

Urogenital Infection

- Common Bacteria
- Mycoplasma hominis & genitalium
- Ureaplasma urealyticum

Wound Discharge

- Aerobic & Anaerobic Bacteria

TB

- Direct Smear & Culture



Molecular Diagnosis

Hematological Malignancies

- AML1/ETO PCR - AML-M2
- BCR/ABL (P190) PCR-ALL
- BCR/ABL (P210) PCR-CML
- CBFβ/MYH11 inv(16)-AML-M4
- JAK2 Mutation PCR for MPNs
- PML /RARA PCR-AML-M3

Transplantation

- HLA class I (ABC) class II (DR&DQ)(PCR)
- WBC X match (Donor & panel) (Cytotoxicity & Flow cytometry) , Augmented CDC, CD3/CD19

Thrombophilia

- MTHFR A1298C/ C677T mutation
- Beta fibrinogen mutation
- Prothrombin G20210A mutation (Factor II)
- Factor V Leiden , Factor VII & XIII mutation
- PAI mutation

Pharmacogenomic

- KRAS , NRAS , BRAF , EGFR



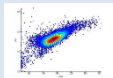
Molecular Diagnosis (*cont.*)

Infectious Diseases

- Adenovirus PCR
- Aspergillus sp & fumigatus PCR
- BK virus PCR
- BK virus (Quantitative)
- Brucella PCR
- Candida sp & albicans PCR
- Chlamydia trachomatis PCR
- CMV PCR
- CMV PCR (Quantitative)
- EBV PCR
- Enterovirus PCR
- HBV PCR (Qualitative)
- HBV PCR (Quantitative)
- HCV Genotyping PCR
- HCV PCR (Qualitative)
- HCV PCR (Quantitative)
- HDV PCR
- Helicobacter PCR
- HIV PCR(Qualitative)

Infectious Diseases

- HIV PCR (Quantitative)
- HPV Genotyping PCR
- HSV PCR
- HTLV PCR
- JC virus PCR
- Measles PCR
- Mycobacterium PCR
- Mycoplasma pneumonia PCR
- Mycoplasma genitalium PCR
- Mycoplasma hominis PCR
- Mumps PCR
- Neisseria Meningitidis PCR
- Neisseria gonorrhoeae PCR
- Parvovirus PCR
- Pneumocystis carinii PCR
- Rubella PCR
- Toxoplasma PCR
- Ureaplasma urealyticum PCR
- VZV PCR



Flow Cytometry

Immunophenotyping For Peripheral Blood Cells & Bone Marrow and Body Fluids

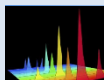
- CD1a
- CD2
- CD3
- CD4
- CD5
- CD7
- CD8
- CD10
- CD11a
- CD11b
- CD11c
- CD13
- CD14
- CD15
- CD16
- CD18
- CD19
- CD20
- CD21
- CD22
- CD23
- CD25
- CD27
- CD33
- CD34
- CD38
- CD41
- CD43
- CD45
- CD45RO
- CD54
- CD56
- CD61
- CD64
- CD68
- CD71
- CD79
- CD103
- CD117
- HLA-DR
- MPO
- CD IgD
- CD IgM
- TdT



T.D.M

T.D.M

- Acetaminophen
- Alprazolam
- Amikacin
- Aspirin
- Carbamazepine
- Clonazepam
- Cyclosporine
- Cyclosporine 2hrs.
- Diazepam
- Digoxin
- Ethosuximide
- Gabapentin
- Gentamycin
- Infliximab
- Lamotrigine
- MTX
- Oxazepam
- Phenobarbital
- Phenytoin
- Primidone
- Sirolimus
- Tacrolimus
- Valproic acid
- Vancomycin



Toxicology

Antiepileptic Drugs

- Carbamazepine
- Clonazepam
- Ethosuximide
- Gabapentin
- Lamotrigine
- Phenobarbital
- Phenytoin
- Primidone
- Topamax
- Valproic acid

Benzodiazepines

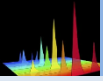
- Alprazolam
- Chlordiazepoxide
- Clonazepam
- Clobazam
- Diazepam
- Flurazepam

Benzodiazepines (cont.)

- Nitrazepam
- Olanzapine
- Oxazepam

Anti Depressant (Three Cyclic Acids)

- Amitriptyline
- Amoxepine
- Bupropion
- Clozapine
- Doxepine
- Fluoxetine
- Haloperidol
- Imipramine
- Maprotiline
- Nefazodone
- Nortriptyline
- Paroxetine
- Sertraline



Toxicology (cont.)

Anti Depressant (cont.)

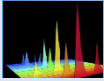
- Biperidine
- Clomipramine
- Desipramine
- Fluramine
- Risperidone
- Thioridazine
- Trimipramine

Salicylate & Aspirin Like

- Aspirine
- Brufen
- Diclofenac
- Endomethicine
- Mefenamic acid
- Naproxen
- Oxyphenbutazone
- Piroxicam

Narcotic & Opium Alkaloid

- Cocaine
- Codeine
- Crack
- Diphenoxylate
- Heroin
- Methadone
- Morphine
- Nalorphine
- Naltroxan
- Neurogesic
- Nicotine
- Opium
- Temgesic
- Tramadol



Toxicology (cont.)

Phenothiazines

- Chlopromazine
- Fluphenazine
- Hydroxyzine
- Perphenazine
- Phenazine
- Promethazine
- Thiethylperazine

Hallucinogens

- Cannabis (THC)
- Phencyclidine

Stimulants

- Amphetamine
- Ecstasy
- L.S.D
- Methamphetamine

Cardiac drugs

- Adalate

Cardiac drugs (cont.)

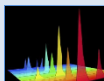
- Amiodarone
- Caffeine
- Captopril
- Dipyridamole
- Diltiazem
- Enalapril
- Metoral
- Propranolol

Anticoagulant

- Coumarine
- Heparine
- Warfarin

Anti Diabetic Drugs

- Furosemide
- Glibenclamide
- Metformin



Toxicology (cont.)

Other Drugs

- Acetaminophen
- Adriamycin
- Atropine
- Baclofen
- Diphenhydramine
- Hyoscine
- Keppra
- Loratadine
- Meprobamate
- Metoclopramide
- Theophylline
- Tranlycypromine

Volatile Substance

- Cyanide
- Ethanol
- Ethylene glycol

- Methanol
- Phosphine

Pesticide

- Carbamate pesticide
- Chlorinated pesticide
- Paraquat herbicide
- Phosphorus Pesticides
- Pyrethroides pesticide

Gases Toxin

- Carbon monoxide

Metal Toxin

- Arsenic
- Lead
- Mercury



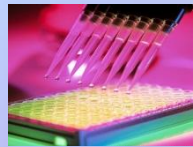
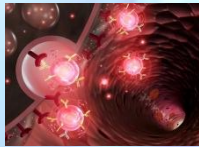
For Research Projects and on Request Tests.

- Fibronectin
- Ghrelin
- GSH
- ICAM-1
- IL-1
- IL-10
- IL-15
- IL-18
- IL-2
- IL-4
- Myonectin
- Myogenin
- Myostatin
- IL-8
- Nitrite/Nitrate
- PC
- SOD
- TGF- β
- IFN- γ
- VCAM-1
- Visfatin
- i-resin



آزمایشگاه پاتوبیولوژی نور

پانل بیماری ها



آدرس: تهران، بلوار کشاورز، بین کارگر و جمالزاده ساختمان ۹۳

تلفن: ۶۶۴۲۹۸۷۱ دورنگار: ۶۶۴۲۳۳۳۷

www.noorlab.ir



Anemia Panel

- CBC
- Ferritin
- Hb Electrophoresis
- Iron , TIBC
- Erythropoietin
- Reticulocyte Count
- Transferrin
- Vitamin B12& Folic Acid



Cancer Screening Panel

- AFP , CEA
- B2microglobulin
- β hCG , Free β hCG
- CA 125 (Ovarian)
- CA 15-3(Breast)
- CA 19-9(Pancreas)
- CA 242 (Gastrointestinal)
- CA 72-4
- Calcitonin
- CBC with PBS
- CRP
- Chromogranin A
- Cyfra-21
- ESR
- HE4
- IHC
- Inhibin A & B
- NMP-22
- NSE
- PSA & Free PSA



Cardiovascular Disease Panel

- Albumin, Alkaline Phosphatase (ALP)
- ALT, AST
- Cholesterol, HDL, LDL, VLDL
- CPK, CPK-MB
- CRP-hs
- Homocysteine
- LDH
- Myoglobin
- MTHFR(A1298C,C677T) mutation PCR
- Pro BNP (NT)
- Sodium, Potassium, Chloride
- Triglycerides, Apo A1, Apo B, Lp(a)
- Troponin I & T



Diabetes Panel

- Anti insulin Ab
- Anti GAD, Islet cell Ab
- Anti Islet antigen 2
- C peptide
- FBS, BS , Glucose 2hrs
- GCT , GTT
- Hb A1C, Fructosamine
- Insulin
- Microalbumin(urine Ran.&24 hrs)
- Urine analysis



Drug Screen Panel

- Amphetamines
- Barbiturates
- Cannabis
- Cocaine
- Opium
- Methadone
- Ethanol



Fertility Panel

Women tests

- Chlamydia Trachomatis Ag & Ab
- Dual Marker
- Estradiol
- FSH, LH
- Homocysteine
- AMH
- Macroprolactin
- Mycoplasma hominis and genitalium Culture
- Post-coital Cervix test
- Progesterone
- Prolactin
- Quad Marker
- SHBG
- Triple Marker
- TSH ,T3, T4, TPO, Anti TG
- Ureaplasma urealyticum Culture
- Vaginosis & Vaginal Culture
- CD markers



Fertility Panel

Men tests

- Anti Sperm Antibody (ASA)
- Chlamydia Trachomatis Ab
- Chlamydia Trachomatis Ag
- DHEA-S
- Free & Total Testosterone
- FSH
- Genital Herpes
- LH
- Mycoplasma hominis Culture
- Prolactin
- Semen analysis
- Semen Culture
- SDFI
- TSH / T3, T4
- Ureaplasma urealyticum Culture



Thrombophilia Panel

- PT, PTT, Lupus Anticoagulant Ab
- Antithrombin III
- D- dimer, FDP, Fibrinogen
- Factor II, V, VII, XIII mutation PCR
- Factor V Leiden
- MTHFR(A1298C,C677T) PCR
- PAI mutation by PCR
- Protein C & S



Hypertension Panel

- Cortisol (Blood & Urine)
- Epinephrine, Norepinephrine, Dopamine
- Renin, Aldosterone
- Thyroid Screening panel (T3, T4, TSH, TPO, Anti TG)
- Urinary Metanephrine and Normetanephrine



Liver Panel

- Anti SLA
- ALP
- ALT & AST
- Bilirubin (Total & Direct)
- Ceruloplasmin
- Copper (Blood and Urine)
- GGT (γ Glutamyl Transferase)
- ANA, ASMA, AMA, LKM Ab
- Hepatitis A, B, C, D, E, G Abs
- LDH
- PT, PTT
- Total Protein, Albumin



Myeloma Panel (Cont.)

- Light Chain Amyloidosis (AL)
- β 2 Microglobuline Amyloidosis
- Pathology & Congo red Staining For Amyloidosis
- Pathology & IHC for Bone Marrow



Myeloma Panel

- Serum Protein Electrophoresis & Immuno Electrophoresis
- Immunoglobulin Determination for IgG, IgM, IgA & IgE
- Urine Protein Electrophoresis & Immuno Electrophoresis
- Free-Light Chain (kappa & Lambda) in Serum & Urine.
- Kappa & Lambda Chain Excretion in Urine
- Bence Jones Protein (SDS & Physical)



Noor Pathobiology Laboratory Diseases Panel



Newborn Screening Panel

Metabolic Disorders :

- Amino Acids Blood & Urine Chromatography (HPLC)
- Congenital hypothyroidism T3 , T4 , TSH
- Cystic Fibrosis : Sweat Test ,Stool for Trypsin Activity, Elastase, Lactoferrin
- Hb disorders, Hemoglobinopathies, Hb Electrophoresis
- PKU Test, Phenylalanine & Tyrosine level
- Tandem Mass Spectrometry for Congenital Metabolic Disorders (AA, Fatty acids, Organic Acids, Carnitine Metabolism Urea cycle)(MPS I/II, Krabbe, Gaucher, Nemann Pick A/B,...), Acylcarnitine profile, Stool fat,
- Urine Sugars Chromatography (TLC)

Infectious Diseases :

- Brucella
- Chlamydia
- CMV
- EBV
- Hepatitis A, B, C, D, E
- HIV
- HSV
- Measeles
- Mumps
- Rubella
- Syphilis
- Toxoplasma
- VZV
- Yersinia



Auto Immune Disease Panel

- Gastro-Intestinal: Gliadin-Ab, TTG Ab, Endomesial-Ab, ASCA, ANCA, HLA-DQ (PCR), Antiparietal Cell Ab, Anti Islet antigen 2, Lichen Planus and Other Skin Diseases by Direct IFA
- LKM-Ab, ASMA, AMA, ASA, Anti Intrinsic factor, Anti SLA
- Anti Phospholipase A2 receptor
- MS & Myasthenia Gravis Panel(Musk Ab, NMO-G Ab, MOG Ab)
- Pemphigus Direct & Indirect (IFA), Desmoglein Ab(I&III)
- Thyroid: TPO-Ab, Anti Thyroglobulin, Anti TSH receptor Ab



Systemic Diseases Panel

- ANA
- RNP, jo-1
- SCL-70
- CCP-Ab, MCV-Ab
- Anti DNA
- SSA, SSB
- RF
- Anti Sm, Histone



Renal Disease Panel

- 24-hr Urine Creatinine, Protein
- Protein total, Albumin & Microalbuminuria
- ALT / AST / ALP
- Bence Jones Protein
- GFR



Renal Disease Panel

Renal Disease (cont.):

- Bilirubin
- BUN
- Calcium, Phosphorus
- Chloride
- Creatinine
- Creatinine Clearance
- Cystatin C
- Glucose
- Immuno-Electrophoresis
- Magnesium
- NGAL
- SDS page electrophoresis
- Sodium, Potassium
- C3, C4, C1q, CH50, AH50
- Factor H, I, B
- Anti factor H, I
- C5b-9
- Work Up of Proteinuria



Pancreatic Disease Panel

- Amylase
- Calcium
- FBS
- Lipase
- Triglycerides



Solid Tumors Panel

- AFP
- β hCG
- CA-125
- CA-15-3
- CA-19-9
- CA-242, CA 72-4
- CEA , Chromogranin A
- Ferritin
- HE4, NSE, Cyfra-21
- Inhibin A & B
- Pathology & IHC



TB Panel

- ACE
- ADA in Serum & body fluids
- Direct Smear & Culture.
- Pathology for TB-biopsies
- PPD
- TB-PCR & MDR
- IGRA

TDM (cont.)

- Nitrazepam
- Phenobarbital
- Phenytoin
- Primidone
- Topamax (Topiramate)
- Valproic acid, Vancomycin
- Tacrolimus, Sirolimus



T.D.M. Panel

- Acetaminophen
- Amikacin
- Aspirin (Salicylate)
- Carbamazepine
- Cyclosporine
- Diazepam
- Digoxin
- Ethosuximide
- Gabapentin
- Lamotrigine
- Lithium



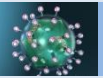
Thyroid Panel

- Free T3
- Free T4
- Free Thyroxine Index (FTI)
- T3
- T3 uptake
- T4
- Thyroid Peroxidase Ab (TPO)
- Thyroglobulin Antibody
- TSH, TSH receptor Ab



Drug abuse Panel

- Amphetamines
- Cannabis(THC)
- Cocaine
- Drug abuse
- Ecstasy (MDMA)
- Methadone & Tramadol
- Methamphetamine
- Opiates & Codeine



Viral Hepatitis Panel

- CMV
- EBV
- HAV IgG
- HAV IgM
- HAV Total
- HBcAb
- HBcAb IgM
- HbeAg & Ab

Viral Hepatitis (*cont.*)

- HBsAb
- HBsAg
- HBV PCR Quan. & Qual.
- HCV PCR Viral Load
- HCV Ab
- HCV Genotyping
- HCV PCR
- HCV Western Blot (RIBA test)
- HDV Ab
- HEV Ab



Viral pathogens Panel

- BK virus.....Quantitative/Qualitative Real Time PCR
- CMV.....Quantitative/Qualitative(PCR Probe Based)
- EBV.....Qualitative(PCR Probe Based)
- Enterovirus.....Qualitative Real Time PCR
- HCV.....Quantitative/Qualitative(PCR Probe Based)
Genotyping Real Time PCR type 1 to 4
- HDV.....Qualitative Real Time PCR
- HIV.....Qualitative(PCR Probe Based) Type 1
Quantitative type I
- HPV.....Qualitative(Screening test)
- HPV.....Genotyping PCR
- HSV.....Qualitative(PCR Probe Based) Type 1 & 2
- HTLV.....Qualitative Real Time PCR
- Measles.....Qualitative Real Time PCR
- Mumps.....Qualitative Real Time PCR
- Parvovirus.....Qualitative Real Time PCR
- Rubella.....Qualitative(PCR Electrophoresis Based)
- VZV.....Qualitative(PCR Probe Based)
- JC virusQualitative Real Time PCR



Vitamin and Nutrition Panel

- Calcium
- Cholesterol (Total, HDL & LDL)
- Electrolytes (Na, K, Cl, Mg, Zn)
- Folic Acid
- Glucose
- Iron
- Triglycerides
- Uric acid
- Vitamin A
- Vitamin B1
- Vitamin B2
- Vitamin B6
- Vitamin B12
- Vitamin C
- Vitamin D
- Vitamin E



Multiple Sclerosis (M.S.) Panel

- Albumin & IgG Index
- NMO Ab
- OCB Typing with IEF or IgG Immuno Fixation



Leukemia Panel

- Flow cytometry
- Molecular Diagnosis:
PML/RARA t(15;17), BCR/ABL t(9;22)
AML1/ETO t(8;21), CBFβ/MYH11 inv(16)
JAK2 Mutation
- MRD
- Pathology & IHC



Immunodeficiency Panel

- Anti Tetanus Antibody Titration
- Antibody Titration for Blood Groups
- Immunophenotyping by Flow cytometry
- Quantitative Assay for Serum Immunoglobulins



Transplantation Panel

1- Donor Selection by

- Class I (ABC) & II (DR,DQ) HLA Typing by PCR Method
- WBC X match (Donor & panel) (Cytotoxicity & Flow cytometry) , Augmented CDC, CD3/CD19 IgG & IgM Detection in WBCxmatch
Flow cytometry or bead Ag for detection anti HLA class I & II.

2- Pre Transplantation Infectious Panel:

MTB, EBV, HCV, HIV, VZV, CMV

3- Post Transplantation Monitoring

- BK-Virus by Real Time PCR
- Cyclosporine, Tacrolimus and Sirolimus Level
- CMV Abs (IgG/IgM)
- CMV Ag
- CMV by Real Time PCR
- Galactomannan
- HLA Ab Screening & Identification



Noor Pathobiology Laboratory

List of Specialty Tests & Diseases Panel



✓ Results you can trust

No.93 Keshavarz Blvd. Tehran, Iran Tel. : 66429871

Fax : 66422337 www.noorlab.ir